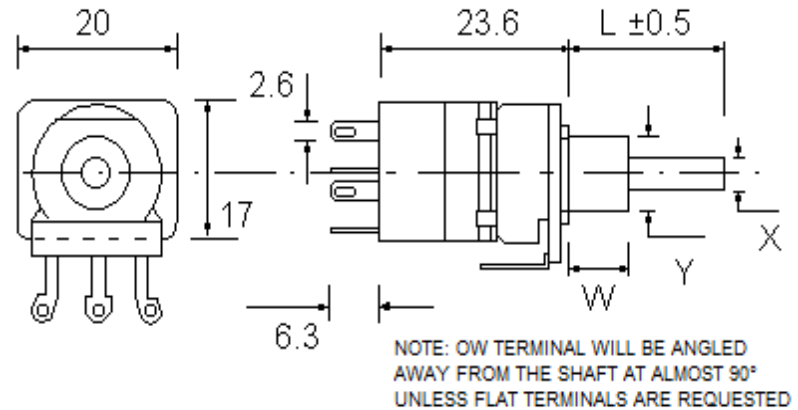
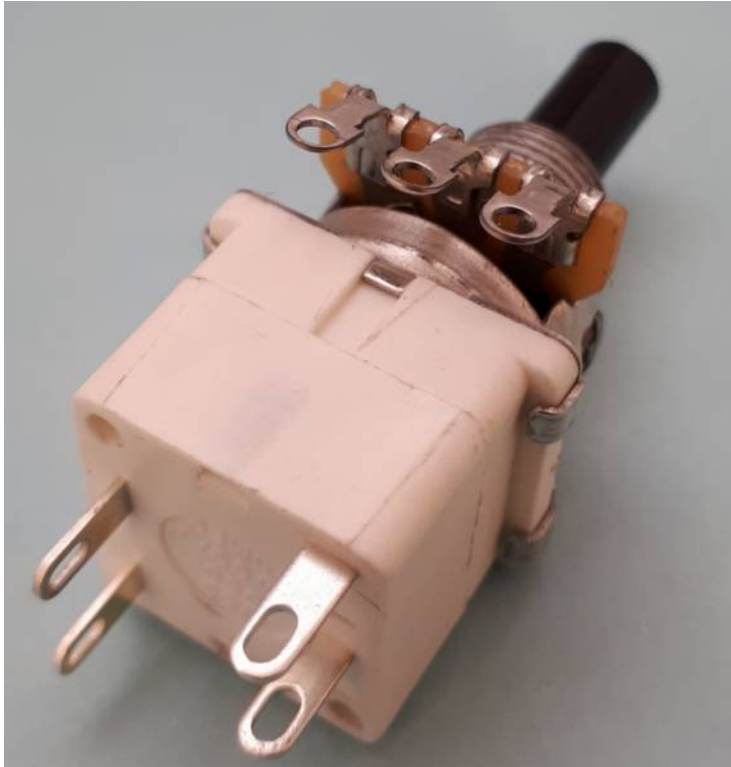


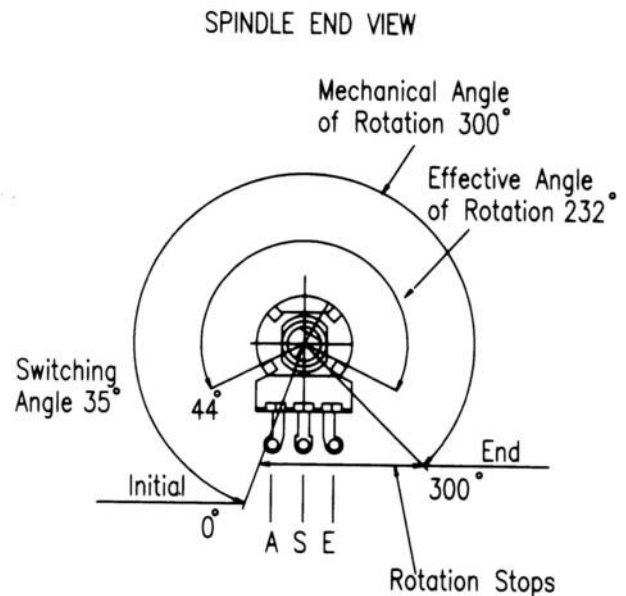
OW16BU/B4OW2S

B4OW2S – 4 Amp Double Pole (Single Throw) Switch OW – Ordinary Wiring Terminals (for soldering)



- W Mounting Height
- Y Mounting Diameter
- X Spindle Diameter
- L Spindle Length

- A Initial Termination
- S Wiper (or moving contact) termination
- E End Termination



Total mechanical and effective electrical angles of rotation of potentiometers with rotary switch



P16 Range Technical Data

Life Expectancy of >20,000 cycles (tested at 30 times per minute)

Conductive polymer (plastic) track (over twice the life of carbon tracks)

Rotation angle: $270^{\circ} \pm 5^{\circ}$ (Unswitched), $300^{\circ} \pm 5^{\circ}$ (Switched)

Operating Torque: 0.4 – 2.0 N.cm (Initial Torque may be higher)

Rotational torque of spindle can be made high or low

Detents (stop positions) Available: Centre, 11, 21, 31, 41

Permissible Axial Spindle Load: 50 N (5 Sec. maximum)

Permissible Torque at End Stop: 35 N.cm

ELECTRICAL SPECIFICATION

Rated Power Dissipation @40°C for ECO potentiometers:

0.25W linear law

0.12W nonlinear law

Rotation angle: $270^{\circ} \pm 5^{\circ}$ (Unswitched), $300^{\circ} \pm 5^{\circ}$ (Switched)

Effective rotation: 232° nominal

Insulation Resistance: ≥ 4 Gohms

Rated Resistance: E3 Series

- Optional: E6 Series
- Linear Law: 1K - 1M
- Nonlinear Law: 4K7 - 470K

Tolerance on Rated Resistance: $\pm 20\%$

- Optional Tolerance on 1K - 1M: $\pm 10\%$

Resistance Laws (Taper):

- Linear: A
- Nonlinear: B - Log (Audio) or C - Antilog (Reverse Audio)
- Other laws: Please refer to Sales office

Rotary Switch Specification

The rotary switch modules are manufactured to EN61058-1 standard using high quality materials with a flame retardant housing. Although no longer certified due to the excessive cost of maintaining approvals, the 1 Amp and 4 Amp switch series have both been previously certified by UL International Demko (copies of previous certificates are available on our website or on request). The same materials, components and production techniques are used as in the certified versions and Omeg Ltd continues to test to the EN61058-1 standard

The 1 Amp contact rating is only available when mounted on the ECO potentiometer

1 A Contact Rating:

Note: The 1A contact rating is NOT available for mounting on the P16 or P20 potentiometer.

1A/250Vac 2.5A/12Vdc

Surge rating (0.01 seconds): 20A

Contact gap: 3mm (Full mains separation of contacts)

Manufactured to EN61058-1 standard

4 A Contact Rating:

4A/250Vac 10A/12Vdc

Surge rating (0.01 seconds): 80A

Switch contacts: Silver tin oxide

Contact gap: 2mm (Micro disconnection of switch - micro separation of contacts)

Manufactured to EN61058-1 standard

Common features

Housing material: Flame Retardant Glass filled polyester (UL 94 VO)

Initial contact resistance: 20 milliohms

Insulation resistance: 50,000 Megohms

Life (operations at full load): 10,000 minimum

Operating temperature: -25°C to +70°C

Operating torque for SPST/SPDT: 1.5 - 3 cNm

Operating torque for DPST/DPDT: 3.0 - 6 cNm

Mechanical rotation: 300°

Proof voltage: 3kV minimum

Rotary Switch Terminals

Layout

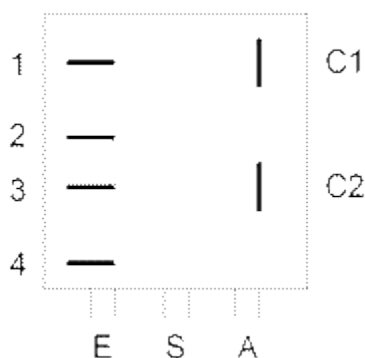


Diagram as viewed on the rear of the switch module:

(Potentiometer terminals at the bottom)

Configuration



SPST - Single pole (1S), Single throw (On-Off)



DPST - Double pole (2S), Single throw (On-Off)



SPDT - Single pole (1S), Double throw (CH)

(**NOT** certified)



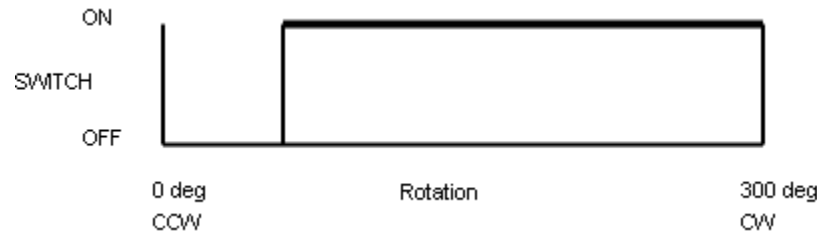
DPDT - Double pole (2S), Double throw (CH)

(**NOT** certified)

Notes

1. Moving contact(s) shown when the potentiometer shaft is in a counterclockwise (CCW) position.
2. 'Ordinary Wiring'(OW) or 'Printed Circuit'(PC) terminals can be requested on the switch.
3. Terminals 1 and 3 are only fitted for the Double Throw ('CH' or Changeover) versions which are **NOT** approved nor certified.

Rotary Switch Terminals



Standard (1A or 4A contact ratings)

N/O normally OPEN Switch

Contacts normally OPEN;

CLOCKwise rotation to CLOSE contacts

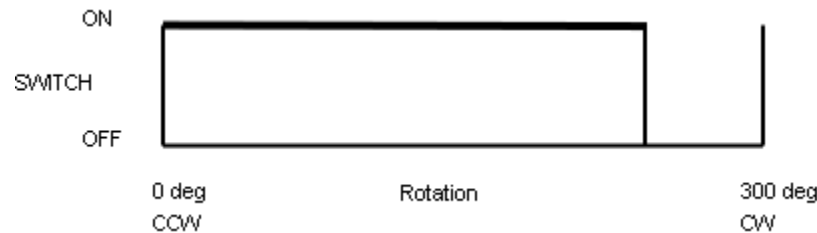


Option 1 (4A contact rating only)

N/C normally CLOSED Switch

Contacts normally CLOSED;

CLOCKwise rotation to OPEN contacts

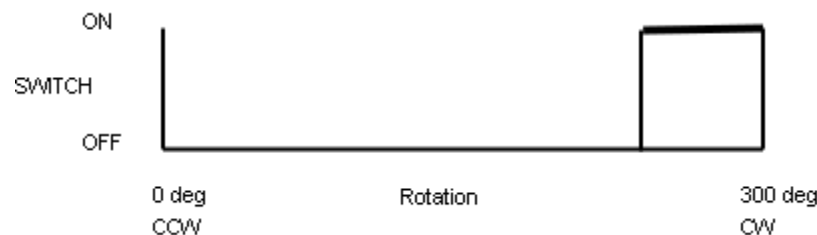


Option 2 (4A contact rating only)

REVERSED N/O normally OPEN Switch

Contacts normally OPEN at fully clockwise position;

ANTI-clockwise rotation to CLOSE contacts



Option 3 (4A contact rating only)

REVERSED N/C normally CLOSED Switch

Contacts normally CLOSED at fully clockwise position;

ANTI-clockwise rotation to OPEN contacts

ELECTRICAL SPECIFICATION UNIQUE TO P16 POTENTIOMETERS

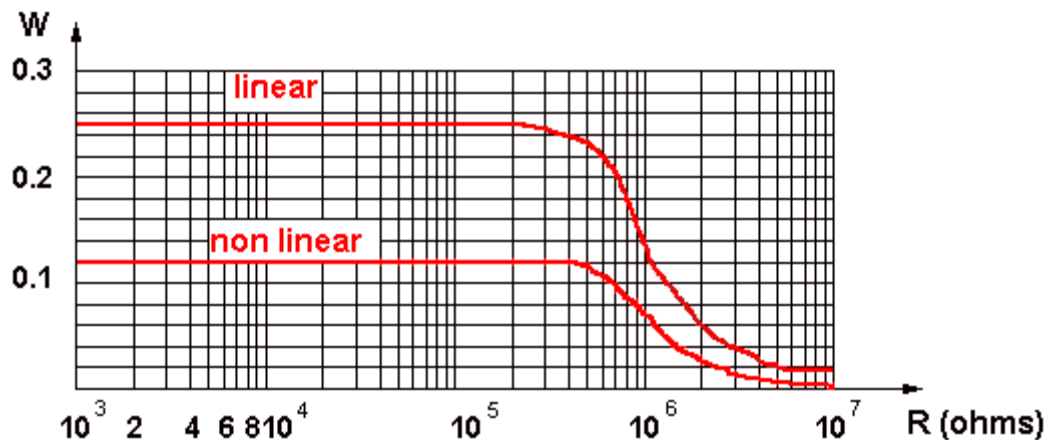
Effective rotation:

- Without a switch: 232° nominal
- With rotary switch: 232° nominal

Rated Power Dissipation @40°C for ECO potentiometers:

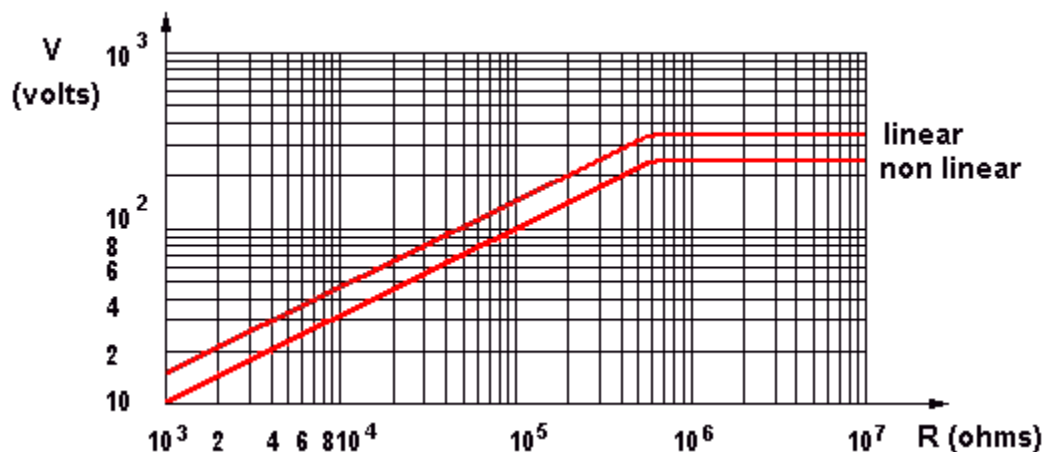
- 0.25W linear law
- 0.12W nonlinear law

ECO, P16 power dissipating curve



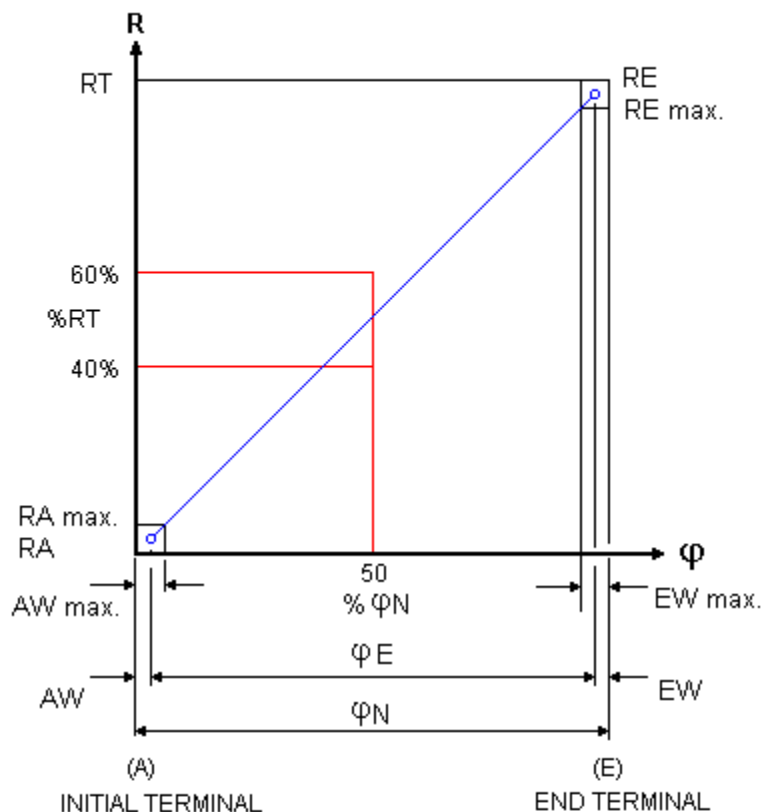
Limiting Element Voltage: 350 V DC for 16mm potentiometers

ECO, P16 maximum working voltage curve



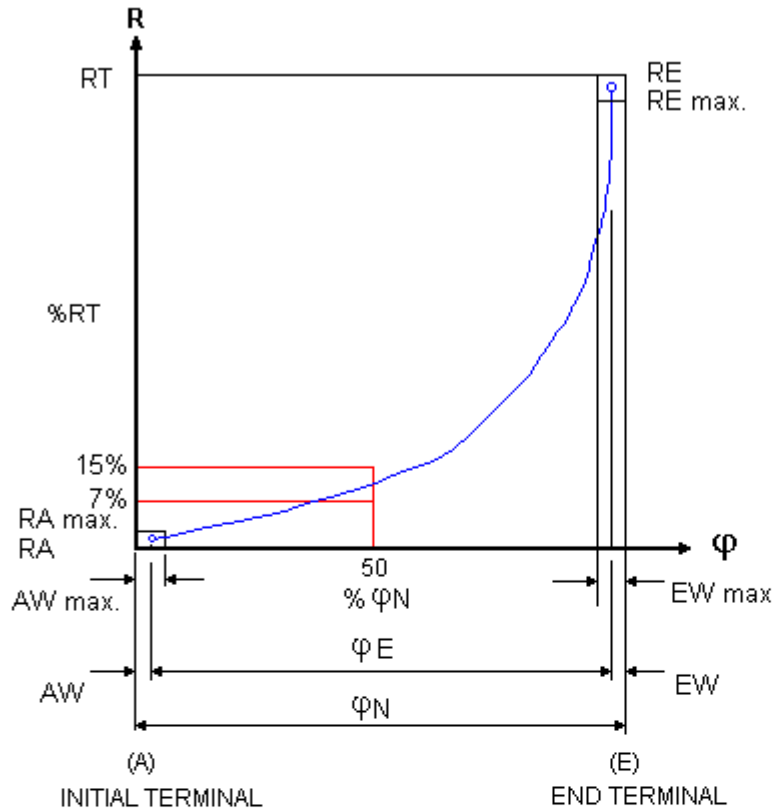
Insulating Voltage: 500 V AC for ECO potentiometers

Resistance law A - Linear



| | | |
|-----|--|--|
| AW | Initial Path | AW max. 12% φN |
| EW | Final Path | EW max. 12% φN |
| Ra | Initial Stop Value | $\leq 1 \cdot 10^{-3} RN$ (Minimum 2 ohms) |
| RA | Hop-on Resistance | $\leq 1\% RN$ |
| Re | End Stop Value | $\leq 1 \cdot 10^{-3} RN$ (Minimum 2 ohms) |
| RE | Hop-off Resistance | $\leq 1\% RN$ |
| RN | Rated Resistance | |
| RT | Effective Resistance | |
| φ | Rotation Angle | |
| φ E | Effective Electrical Angle of Rotation | |
| φ N | Effective Mechanical Angle of Rotation | |

Resistance law B – Log (Audio)



| | | |
|----|--|--|
| AW | Initial Path | AW max. 10% φN |
| EW | Final Path | EW max. 10% φN |
| Ra | Initial Stop Value | $RN \leq 10K \leq 1.10^{-3} RN$ (Minimum 2 ohms) $RN > 10K \leq 2.10^{-4} RN$ (Minimum 10 ohms) |
| RA | Hop-on Resistance | $RN \leq 10K$ 5% RN $RN > 10K$ 0.15% RN |
| Re | End Stop Value | $RN \leq 100K \leq 2.10^{-2} RN$ $RN > 100K \leq 1.10^{-2} RN$ |
| RE | Hop-off Resistance | $RN \leq 10K < 1\% RN$ $RN > 10K$ 0.5% RN |
| RN | Rated Resistance | |
| RT | Effective Resistance | |
| φ | Rotation Angle | |
| φE | Effective Electrical Angle of Rotation | |
| φN | Effective Mechanical Angle of Rotation | |

Resistance law C – Antilog (Reverse Audio)



| | | |
|----|--|--|
| AW | Initial Path | AW max. 10% φN |
| EW | Final Path | EW max. 10% φN |
| Ra | Initial Stop Value | $RN \leq 100K \leq 2.10^{-2} RN$ $RN > 100K \leq 1.10^{-2} RN$ |
| RA | Hop-on Resistance | $RN \leq 10K < 1\% RN$ $RN > 10K 0.5\% RN$ |
| Re | End Stop Value | $RN \leq 10K \leq 1.10^{-3} RN$ (Minimum 2 ohms) $RN > 10K \leq 2.10^{-4} RN$ (Minimum 10 ohms) |
| RE | Hop-off Resistance | $RN \leq 10K 5\% RN$ $RN > 10K 0.15\% RN$ |
| RN | Rated Resistance | |
| RT | Effective Resistance | |
| φ | Rotation Angle | |
| φE | Effective Electrical Angle of Rotation | |
| φN | Effective Mechanical Angle of Rotation | |

Linearity

As a basis of assessing Linearity Tolerance the independent method is the most practical, permitting as it does, the reference curve to be aligned as near as possible to the actual output curve. This avoids the use of the theoretical starting and finishing points, it is normal for the customer to realign the achieved curve with series trimmers at each end of the device if required.

Linearity Tolerance is 4% over the Nominal Resistance range of 1K0 to 1M0. The Linearity Tolerance is measured on at least 70% of the effective rotation range.

Note. In the case of Terminal and Zero-based linearity, both present constraints which increase the manufacturing difficulty and in consequence have an adverse effect on the product's price and availability.

Potentiometer linearity



Matching Tolerance (For Tandem Stereo Potentiometers)

Tandem Potentiometers have two identical resistor units with the same variation law. The mismatching of the two resistor units, expressed in dB, is measured by the difference between the attenuations introduced by each resistor unit at various points of travel.

- Law A: 4 dB at Attenuation range 0 - 20 dB
- Law B and C: 3 dB at Attenuation range 0 - 20 dB

Matched Tolerance for Stereo



| LAW | ATTENUATION RANGE | MATCHING TOLERANCE * |
|-------|-------------------|----------------------|
| A | 0 - 20dB | 4dB |
| B & C | 0 - 20dB | 3dB |

$$* \text{Matching Tolerance} = 20 \log \frac{V1}{V2}$$

Operating Temperature: -25°C to +70°C

Temperature Derating Curve



Temperature Coefficient of Resistance: +300 -500 ppm



P16 Spindles

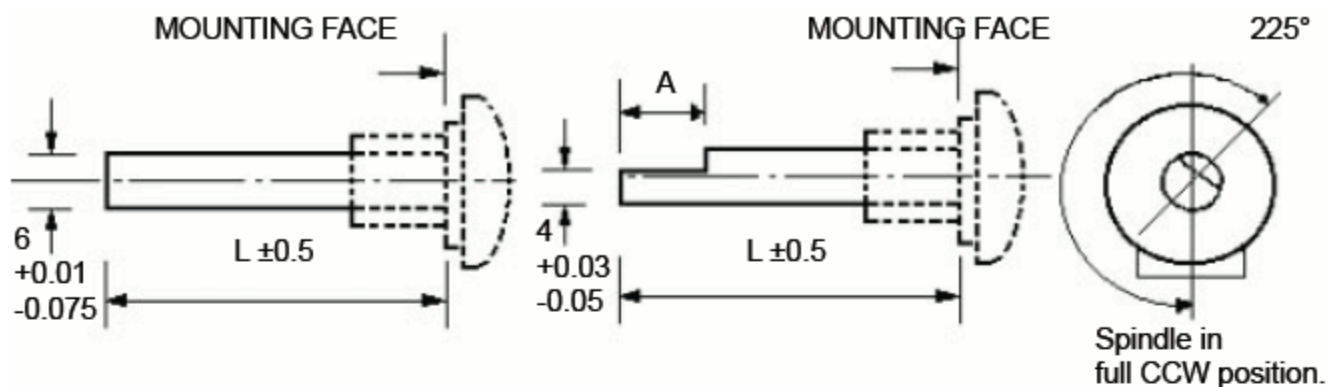
The P16 spindles are plastic, unless otherwise stated, fixed i.e. not removable and they are available in three diameters:

- **6.0mm Diameter**
 - Cylindrical (Type F1)
 - 4.0 x 12mm Flat (Type F2)
 - 5.0 x 15mm Flat (Type F3)
 - 5.0 x 10mm Flat (Type F4)
 - 4.6mm x 15mm Flat (Type F11)
- **4.0mm Diameter**
 - Cylindrical (Type F21)
 - 3.0 x 8.5mm Flat (Type F22)
 - 3.0 x 8.5mm Flat (Type M22 - Metal)
- **6.35mm Diameter**
 - Cylindrical (Type F41)
 - 5.5 x 10mm Flat (Type F42)
 - 5.5 x 15mm Flat (Type F43)
- **Splined Spindle - 6.0mm dia. 18 teeth**
- **Dual Concentric**
 - Flatted/Slotted (Type M15 - Metal)
 - Cylindrical (Type M16 - Metal)

Cylindrical and Flatted Spindles

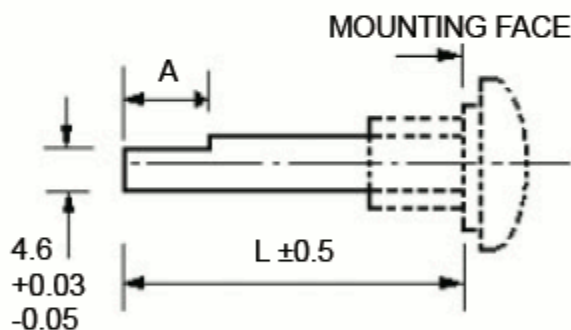
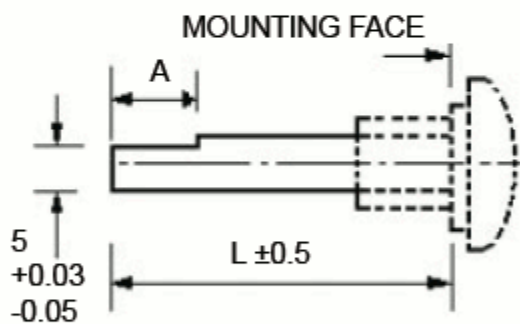
6.0mm Diameter Spindles

Note: *Specials to customer's specification up to 65mm.



| TYPE | DESC. | L (mm) |
|------|---------------|-----------|
| F1 | Plastic Fixed | 15 to 50* |

| TYPE | DESC. | L (mm) | A (mm) |
|------|---------------|-----------|--------|
| F2 | Plastic Fixed | 20 to 35* | 12 |

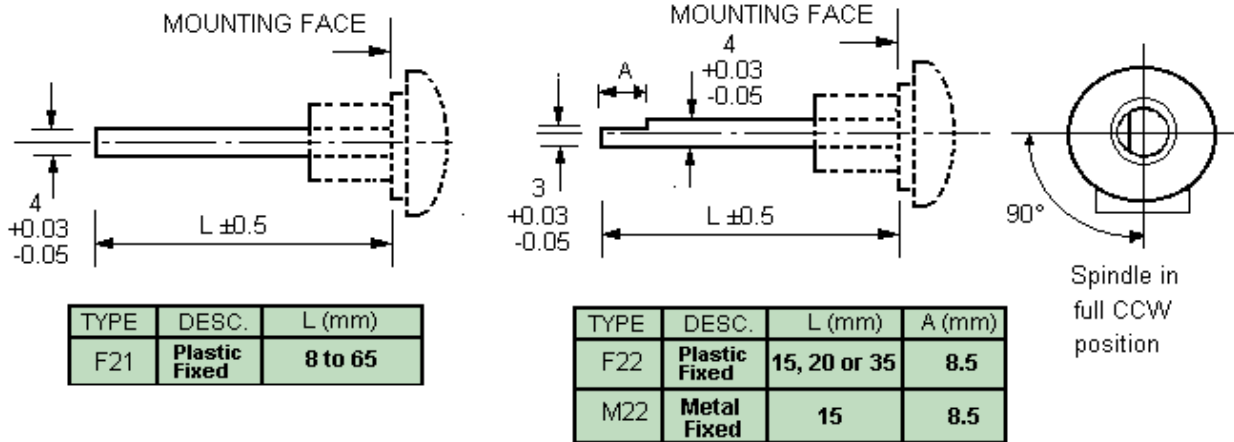


| TYPE | DESC. | L (mm) | A (mm) |
|------|---------------|-----------|--------|
| F3 | Plastic Fixed | 15 to 35* | 15 |
| F4 | Plastic Fixed | 15 to 35* | 10 |

| TYPE | DESC. | L (mm) | A (mm) |
|------|---------------|-----------|--------|
| F11 | Plastic Fixed | 15 to 35* | 15 |

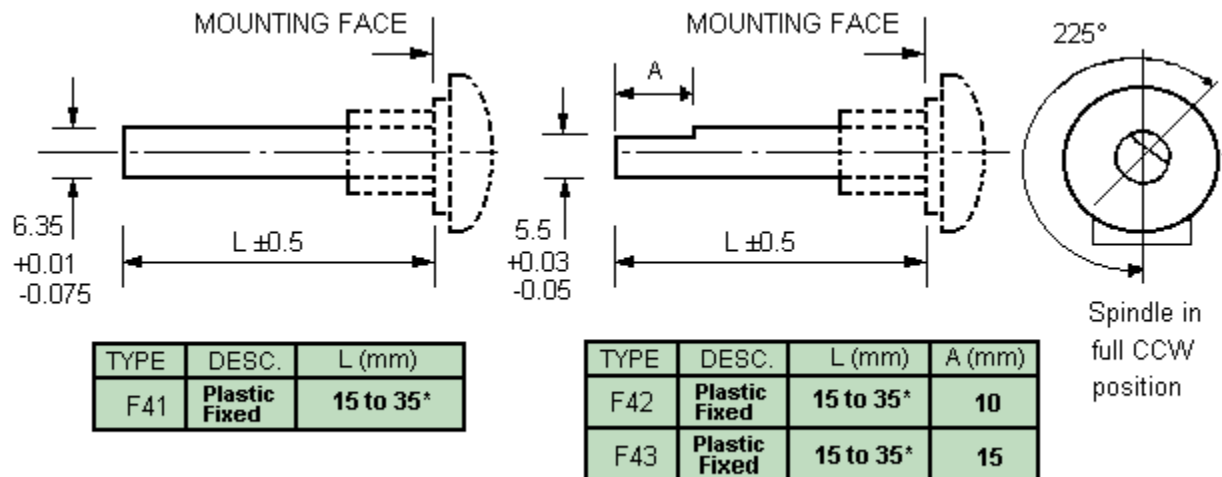
4.0mm Diameter Spindles

Note: The orientation of the flat as illustrated is for plastic spindles only.
 For metal spindles, unless specified on the order, the orientation may be different on each potentiometer type



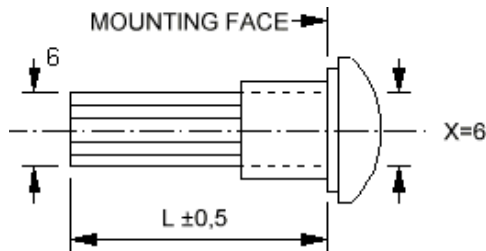
6.35mm Diameter Spindles

Note: *Specials to customer's specification up to 65mm.

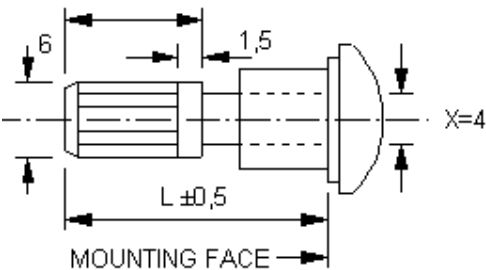
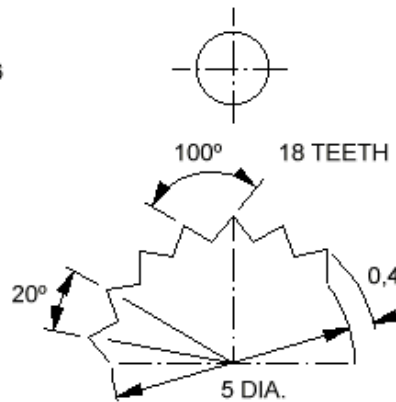


Splined Spindle - 6.0mm dia. 18 teeth

A splined form is available on the 6.0mm diameter P16 plastic spindle (F5)
 or alternatively,
 a 6mm 'Splined Adaptor' (8.7mm long) can be fitted on a 4mm dia. Spindle (F5A):



| TYPE | DESC. | L (mm) |
|------|---------------|--------|
| F5 | Plastic Fixed | 19 |



| TYPE | DESC. | L (mm) |
|------|---------------|--------|
| F5A | Plastic Fixed | 16-36 |

